

## iDS-TCM403-A(I) High Performance ANPR Bullet Camera

**DarkFighter**

**DeepinView**



- 1/1.8" progressive scan CMOS
- 50 Hz: 2688 × 1520 @ 25 fps  
60 Hz: 2688 × 1520 @ 30 fps
- Color: 0.001 Lux @ (F1.2, AGC ON),  
0.0005 Lux with IR
- H.265, H.264
- 140 dB WDR
- 3D DNR
- 
- 
- 
- Alarm I/O
- 1 RS-485 interface  
IR range up to 100 m
- Two defined streams  
Built-in microSD/TF card, up to 128 GB
- License plate recognition  
IP67, IK10
- 

**Auth. Project Partner :**



**Superiority**

- Dedicated camera for ANPR
- HD resolution
- Integrated IR
- Professional shutter speed control

Built-in ANPR engine, equipped with AI algorithm

**Application**

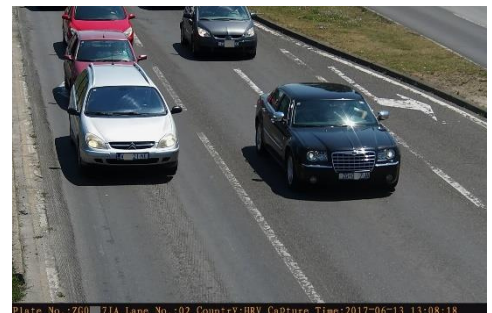
- Vehicle control
- Traffic monitoring
- Toll collection
- Security

**Scenarios**

- Tunnel
- Toll station
- Urban road
- Parking entrance

**Smart Function**

- Support vehicle type classification
- Support vehicle color identification
- Support no-plate vehicle capture
- Support driving direction detection
- Support motorcycle capture



**Auth. Project Partner :**



## Specification

<b>Camera</b>		<b>iDS-TCM403-A(I)/0411 iDS-TCM403-A(I)/0832</b>
Image Sensor	1/1.8" progressive scan CMOS	
Min. Illumination	Color: 0.001 Lux @ (F1.2, AGC ON), 0.0005 Lux with IR	
Shutter Speed	1/25 s to 1/100,000 s	
Slow Shutter	Supported	
Day & Night	IR cut filter	
Digital Noise Reduction	3D DNR	
WDR	140 dB	
<b>Lens</b>		
Focal Length	4-11 mm 8-32 mm	
Aperture	F1.38 F1.63-1.8	
Focus	Auto	
Iris Type	Fixed iris DC drive	
Field of View	Horizontal FOV: 114.7° to 41.9°; Horizontal FOV: 39.7° to 15.9°; FOV Vertical FOV: 59.4° to 23.6°; Vertical FOV: 22.3° to 9.1°; Diagonal FOV: 141.5° to 48.1° Diagonal FOV: 45.8° to 18.1°	
<b>IR</b>		
IR Range	Up to 50 m Up to 100 m	
Wavelength	850 nm	
<b>Compression Standard</b>		
Main stream: Video Compression	H.265/H.264/MJPEG	
Sub-stream: Video Compression	H.265/H.264/MJPEG	
H.264 Type	Baseline profile/Main profile/High profile	
H.265 Type	Baseline profile/Main profile/High profile	
Video Bit Rate	32 Kbps to 16 Mbps	
Audio Compression	G.711/G.722.1	
Audio Bit Rate	8Kbps (G.711) /16Kbps (G.722.1)	
<b>Smart Feature</b>		
Recognition	License Plate Recognition	
Smart Function	Vehicle type classification, color identification, no-plate vehicle capture, vehicle driving direction detection	
<b>Road Traffic and Vehicle Detection</b>		

Auth. Project Partner :



Countries/Regions	<p><b>Mid-East:</b> Turkey, United Arab Emirates, Qatar, Iran, Iraq, Egypt, Jordan, Kuwait, Saudi Arabia, Tunisia, Palestine, Pakistan</p> <p><b>Africa:</b> South Africa, Kenya, Nigeria, Tanzania, Mauritius, Morocco</p> <p><b>Asia-Pacific:</b> Australia, New Zealand, Indonesia, Malaysia, Singapore, South Korea, Thailand, Vietnam, the Philippines, Hong Kong, Macao, Taiwan, Burma, Japan, India, Mongolia</p> <p><b>America:</b> United States of America, Colombia, Brazil, Ecuador, Peru, Mexico</p> <p><b>Europe:</b> Croatia, Slovakia, Czech Republic, Bulgaria, Macedonia, Hungary, Greece, Poland, France, Netherlands, Switzerland, Spain, United Kingdom, Ireland, Germany, Italy, Austria, Israel</p> <p><b>Russian-Speaking Regions:</b> Azerbaijan, Belarus, Kazakhstan, Lithuania, Georgia, Estonia, Latvia, Russian Federation, Ukraine, Moldova, Belarus, Uzbekistan</p>
Accuracy (Under recommended installation and lighting conditions)	<p>Capture rate &gt; 98%</p> <p>Driving direction recognition accuracy &gt; 98.5%</p> <p>LPR accuracy &gt; 98%</p> <p>Mistaken capture rate &lt; 2%</p> <p><b>European and Russian-Speaking Regions:</b> LPR accuracy &gt; 98%</p> <p>Country/Region recognition accuracy &gt; 95%</p>
No License Plate Detection	Yes
Motorcycle LPR	Yes
Vehicle Type	Car/Van/Bus/Truck/Others
Vehicle Color	Red, yellow(including orange), green, blue, purple, brown, white, grey(including silver), black <b>IR Model: Recognizable at daytime only</b>
Vehicle Manufacturer	65 manufacturers: HYUNDAI, TOYOTA, KIA, HONDA, VOLKSWAGEN, BENZ, NISSAN, FORD, ISUZU, BMW, CHEVROLET, MITSUBISHI, RENAULT, OPEL, SUZUKI, SKODA, DAEWOO, AUDI, MAZDA, HINO, PEUGEOT, SSANG YONG, CITROEN, FIAT, SCANIA, MAN, VOLVO, LEXUS, SEAT, LAND ROVER, DAIHATSU, UD TRUCKS, SUBARU, IVECO, MINI, JEEP, PORSCHE, CHERY, DODGE, CHRYSLER, ACURA, ALFA ROMEO, GREAT WALL, INFINITY, SMART, SAIC MAXUS, JAC, JAGUAR, JMC, LINCOLN, JMC, SAAB, FAW, YUTONG, LWE, JOYLONG, GEELY, CADILLAC, JINBEI, ANKAI, HAIMA, FOTON, KING LONG, DONGFENG, EMGRAND
Capture Speed Range	5 to 120km/h
<b>Image</b>	
Max. Resolution	2688 × 1520
Main Stream	50 Hz: 25 fps (2688 × 1520, 1920 × 1080, 1280 × 720, 704 × 576, 352 × 288) 60 Hz: 30 fps (2688 × 1520, 1920 × 1080, 1280 × 720, 704 × 576, 352 × 288)
Sub-Stream	50 Hz: 25 fps (1920 × 1080, 1280 × 720, 704 × 576, 352 × 288) 60 Hz: 30 fps (1920 × 1080, 1280 × 720, 704 × 576, 352 × 288)
Third Stream	50 Hz: 25 fps (1280 × 720, 704 × 576, 352 × 288) 60 Hz: 30 fps (1280 × 720, 704 × 480, 640 × 480)
Image Enhancement	3D DNR
Image Settings	Rotation mode, saturation, brightness, contrast, sharpness, AGC, and white balance are adjustable via client software or web browser.
Video Compression	H.264 and H.265 encoding
Day/Night Switch	Auto/Scheduled/Triggered by alarm in
Picture Overlay	Logo picture can be overlaid on video with 128 × 128 in 24bit bmp format
<b>Network</b>	

Network Storage microSD/TF card (128 GB), local storage and CVR, NVR, ANR	
Alarm Trigger Light Detector Exception	HDD Error, Network Disconnected, IP Address Conflicted, Vehicle Detector Exception, Traffic
Protocols TCP/IP, HTTP, HTTPS, FTP, DNS, DDNS, RTP, RTSP, RTCP, NTP, UPnP, IPv6, UDP	
Security Measures Password protection, HTTPS encryption, digest authentication for HTTP/HTTPS, digest authentication for ONVIF (Version 2.1)	
General Function One-key reset, three streams, heartbeat, password protection, watermark	
API ONVIF (Version 2.1, PROFILE S, PROFILE G), ISAPI, SDK	
Simultaneous Live View Up to 20 channels	
User/Host Up to 32 users 3 user levels: administrator, operator, and user	
Client iVMS-8600, Hik-Central	
Web Browser IE7+	
<b>Interface</b>	
Audio Supported	
1 RJ45 10M/100M/1000M Ethernet interface	
Communication Interface 1 RS-485 interface	
1 Wiegand interface	
Alarm 1 input interface, 1 output interface, 2 relays	
Video Output Network	
On-Board Storage Built-in microSD/TF card, up to 128 GB	
Reset Button Supported	
<b>General</b>	
Firmware Version V4.2.2	
Operating System Linux	
Certifications CE, FCC, RoHS	
Operating Conditions Temperature: -30 °C to +70 °C (-22 °F to +158 °F) , Humidity: 95% or less (non-condensing)	
Power Supply 12 VDC to 24 VDC ± 20%, PoE (802.3at, class 4)	
Protection Level IP67, IK10	
Material Aluminum alloy	
Dimensions With package: 428.5 × 120 × 132.8 mm	
Weight Camera: approx. 3.12 ± 0.5 kg (6.88 ± 1.1 lb)	
Power Consumption Max. 12 W	

\* Listed resolutions are only selectable options. It does not mean that all streams can work at their maximum resolution at the same time.

Auth. Project Partner :



### Available Model

iDS-TCM403-AI/0832

iDS-TCM403-AI/0411

Auth. Project Partner :



### Application Scenario



Urban Road



Mixed Road



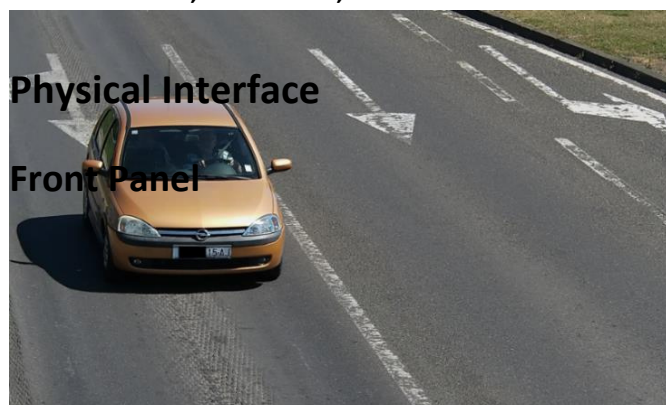
Entrance & Exit



Highway Toll Station

### Application Performance

Urban road, mixed road, etc.



Day



Night





Day



Night

Entrance & exit, highway toll station, etc.



Day



Night

Auth. Project Partner :



Solutions Design | Supply | Installations | AMC | Services

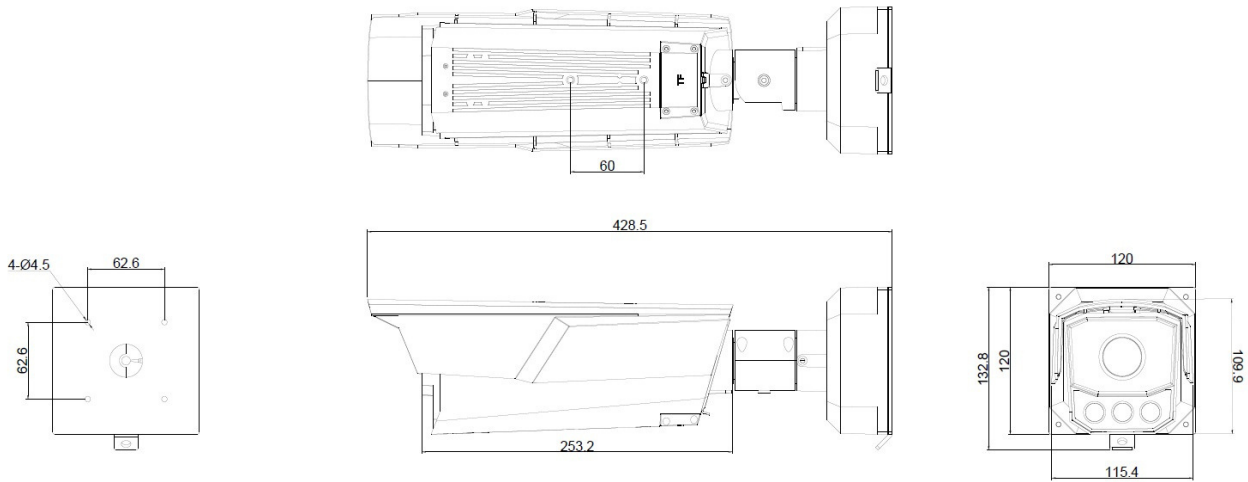
**TECHNOHEAD Security IT & Telecom Projects LLP**

Address :- 706 Siddharth Building 96, Nehru Place, New Delhi – 110019, India

Mobile :- +91 8527590286, 9312286189

Email :- [info@technohead.in](mailto:info@technohead.in) Website : [www.technohead.in](http://www.technohead.in)

## Dimension



Unit: mm

## Accessory

<p>Hoop Bracket DS-1275ZJ-BJH/600 mm</p>	<p>Hoop Bracket DS-1275ZJ-BJH/140 mm</p>

Auth. Project Partner :



**Headquarters**

No.555 Qianmo Road, Binjiang District,  
Hangzhou 310051, China  
T +86-571-8807-5998  
www.hikvision.com

Follow us on social media to get the latest product and solution information.

